

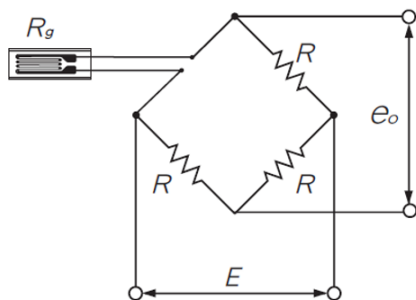
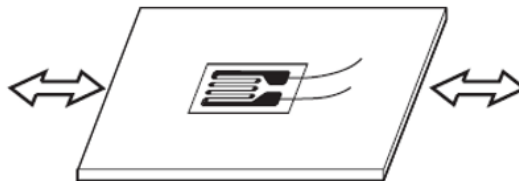
## Strain Gauge Sensor JSG-120R

- Easy to measure all kinds of Strain/Stress;
- Especially apply to Vehicle Crash Test;
- Resistance 120Ω,350Ω, etc. are optional;
- Quick connector for cable and strain gauge;
- Anti-Shock>100g@6ms;
- Sensor connector LEMO FGG.1B.306 is optional.



The strain sensor JSG-120R is based on the stress-strain principle and includes an optional strain gauge. There are resistors matching the strain gauges in the strain bridge box to form a full bridge circuit and output signals. The default cable length is 8m, and the connector and Dallas ID are not included by default.

Application:



$$\text{Sensitivity} = 0.00025 * K_s$$

$K_s$ : Gage Factor

Sensitivity Unit: (mV/V)/(um/m)

Excitation Voltage 2V or 2.5V is recommend.