

## ACU Sender ACU-3C

- Simulate ACU, Verify the performance of Motorized Seatbelt;
- Support 1 channel CAN message send with CAN-HS or CAN-FD;
- Support 2 channels PWM output;
- Support trigger events input by ARM, T0, IN\_1 and IN\_2;
- UPS Battery inside work over 5 hours;
- 2×JBUS interface, daisy connect with other devices easily.

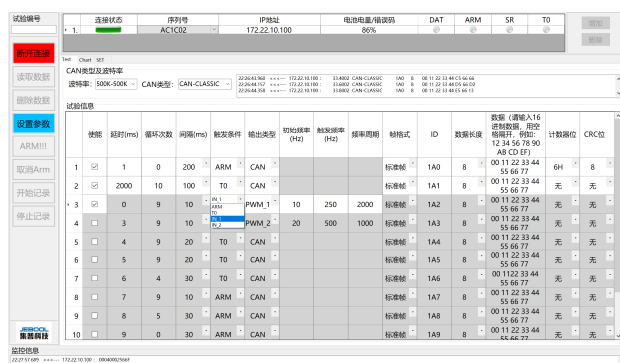


The ACU Sender ACU-3C is mainly used in sled or vehicle crash tests to simulate the ACU to perform functional verification of components based on CAN and PWM protocols (such as motorized seatbelt), thereby quickly developing vehicles. The sending of CAN messages and PWM can be based on ARM, T0, digital input and other markers to send single or cyclic messages. Command editing software is provided, which can be automatically executed offline during testing. The device has a built-in lithium battery and has UPS function.

### Specification:

Name	Unit	Value
BUS Channel	Channels	1×CAN 2×PWM
CAN Baud Rate	kbps	2000 max.
PWM Frequency	Hz	4000 max.
Trigger Event	Switch	T0, IN_1, IN_2
Wake-up message	/	Yes
CRC bit	Auto	Yes
Power Input	V	24~55
Battery Work Time	hours	5
Anti-Shock	g	≥100@6ms
Opera. Temp.	°C	-20—+45
Materials	/	Al. Alloy
Dimension	mm	230×64×70
Weight	kg	1.2

### Software Ref.



### Interface Connectors:

#### CAN BUS ODU GK0L0C-P05Q:

Pin 2	5V-CAN
Pin 3	GND-CAN
Pin 4	CAN-H
Pin 5	CAN-L

#### Trigger Input TRG IN ODU GK1L0C-P05Q:

Pin 1	Switch T0+
Pin 2	Switch T0-
Pin 3	Switch SR+
Pin 4	Switch SR-

#### JBUS A and B ODU GK2L0C-P16Q:

Pin 1, 11, 12	Power Input +
Pin 2, 3, 13	Power GND
Pin 4, 5, 6, 14	Ethernet
Pin 7, 8	Trigger T0 RS485
Pin 15, 16	Trigger SR RS485
Pin 9	Trigger GND
Pin 10	Trigger Terminal

#### Event Input IO ODU GK1L0C-P04Q:

Pin 1	IN_1+
Pin 2	IN_1-
Pin 3	IN_2+
Pin 4	IN_2-