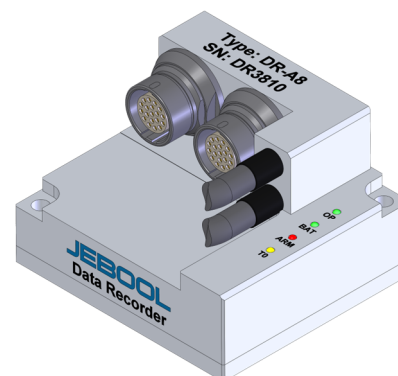


## Data Acquisition Device DR-A8

- Professional to apply DDAS technology;
- Suitable to DDAS sensor and In-Dummy Integration;
- 8×RS485 data bus, up to 96 sensor channels @ 20kHz;
- 4GB Flash Memory inside, the date can be recorded;
- Software and hardware trigger are supported;
- Work together with UPS Battery DR-A8-BAT;
- Ethernet communication, JEBOOL JBUS interface;
- Anti-Shock  $\geq 100g@6ms$ .

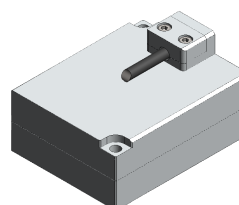


The DR-A8 is designed for data collection of dummies used in automobile crash tests. The sensor signals are digitally transformed through the ADM module, and the data is transferred to the DR-A8 for collection and recording. Since RS485 supports channel bus sharing (when collecting at 20kHz, each RS485 bus supports 12 signal collections), which greatly simplifies the internal wiring of the dummy. DR-A8 can provide 96 channels of signal acquisition, and with the dedicated UPS battery DR-A8-BAT, it is suitable for H3-50th, H3-5th, ES-2re, SID-2s and other dummy data acquisition (In-Dummy).

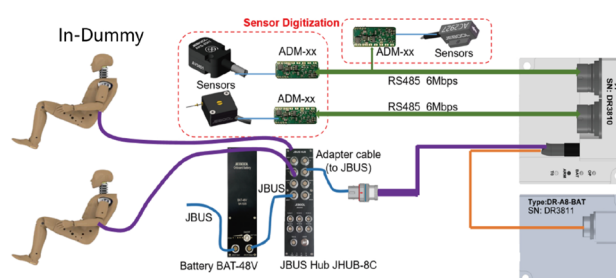
### Specification (25℃):

Name	Unit	Value
Sensor Channels	Channels	96
Sampling Frequency	kHz	20
Recording Time	min	15
Flash Memory	GB	4
Trigger Input	/	SR&T0
RS485 Speed	Mbit/s	6
Current Output	mA	500/port
Ethernet	Mbit/s	100
Power Supply	With DR-A8-BAT	36V~60V
Battery Work Time	min	10
Power Max.	W	60
Operation Temp.	℃	5~40
Weight (with battery)	grams	350

The matched In-Dummy battery DR-A8-BAT:



The application diagram:



LEMO FGN.2F.319 is bus connector as default. It can Convert into JBUS (LEMO FGG.2B.316) by extend cable. The larger battery BAT-48V and In-Dummy Hub JHUB-8C can be optional.

Note: DDAS is Digitization Data Acquisition System. It can record the sensor or signal data which converted by ADM modules.