

## Current Sensor JCS35D

- Applied to various power current monitoring, EV/HEV Battery test during crash test;
- Measurement of DC, AC and pulse current;
- Max. wire diameter 35mm;
- Easy to install;
- Measurement range default 1000A;
- Range 2000A version is optional;
- Response time <10us;
- Anti-Shock 200g.



The current sensor JCS35D is based on the Hall principle to achieve high-precision measurement of line current. The independent power supply is completely isolated from the measurement system, and the direct output voltage signal has a good linear relationship with the measured current. JCS35D has default range 1000A, and below 2500A is optional.

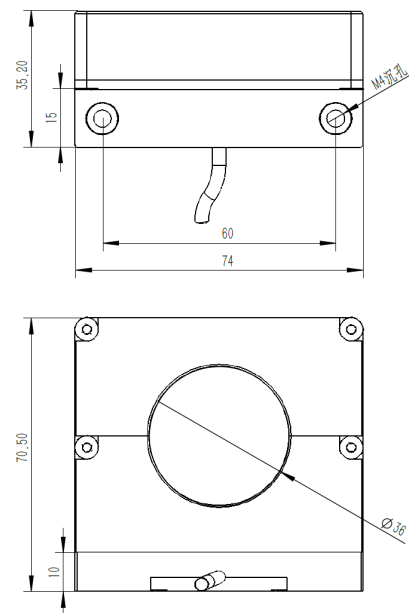
### Specification (5V, 25°C)

Name	Unit	Value
Range	A	±1000
Over range	A	±2500
Non-Linearity	%	<0.5
Hysteresis	%	<0.5
Offset	mV/V	<5
Response time	μs	<10
Excitation	VDC	5 ± 5%
Consumption	mA	10
Anti-Shock	g	200
Isolation	MΩ	>100
Opera. Temp.	°C	-30~45
Store Temp.	°C	-40~50
Material	/	Nylon
Weight	grams	300
Dimension	mm	70.5×74×35.2

Wire length default 8m;

Connector can be customized.

### Dimension:



### Wire Define:

Red	Excitation+
Black	Excitation-
White	Signal-
Green	Signal+
Shield	Connector case